



JULIE WOLFE
OPPOSING FORCES

September 10 – October 29, 2022

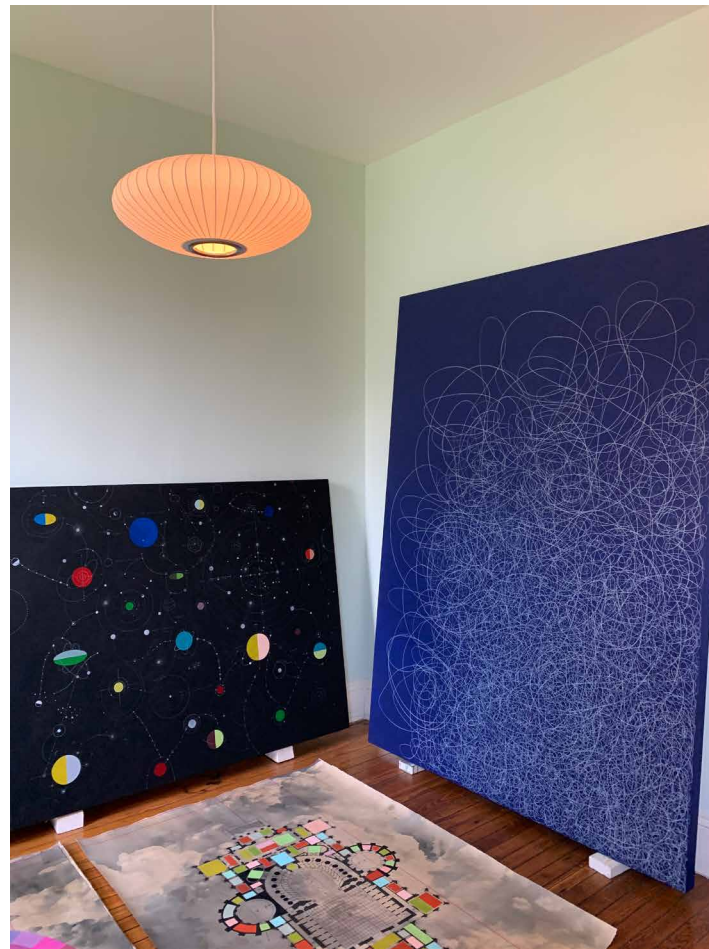


JULIE WOLFE
OPPOSING FORCES

September 10 – October 29, 2022

HEMPHILL

434 K Street NW Washington DC 20001 | hemphillartworks.com | 202.234.5601

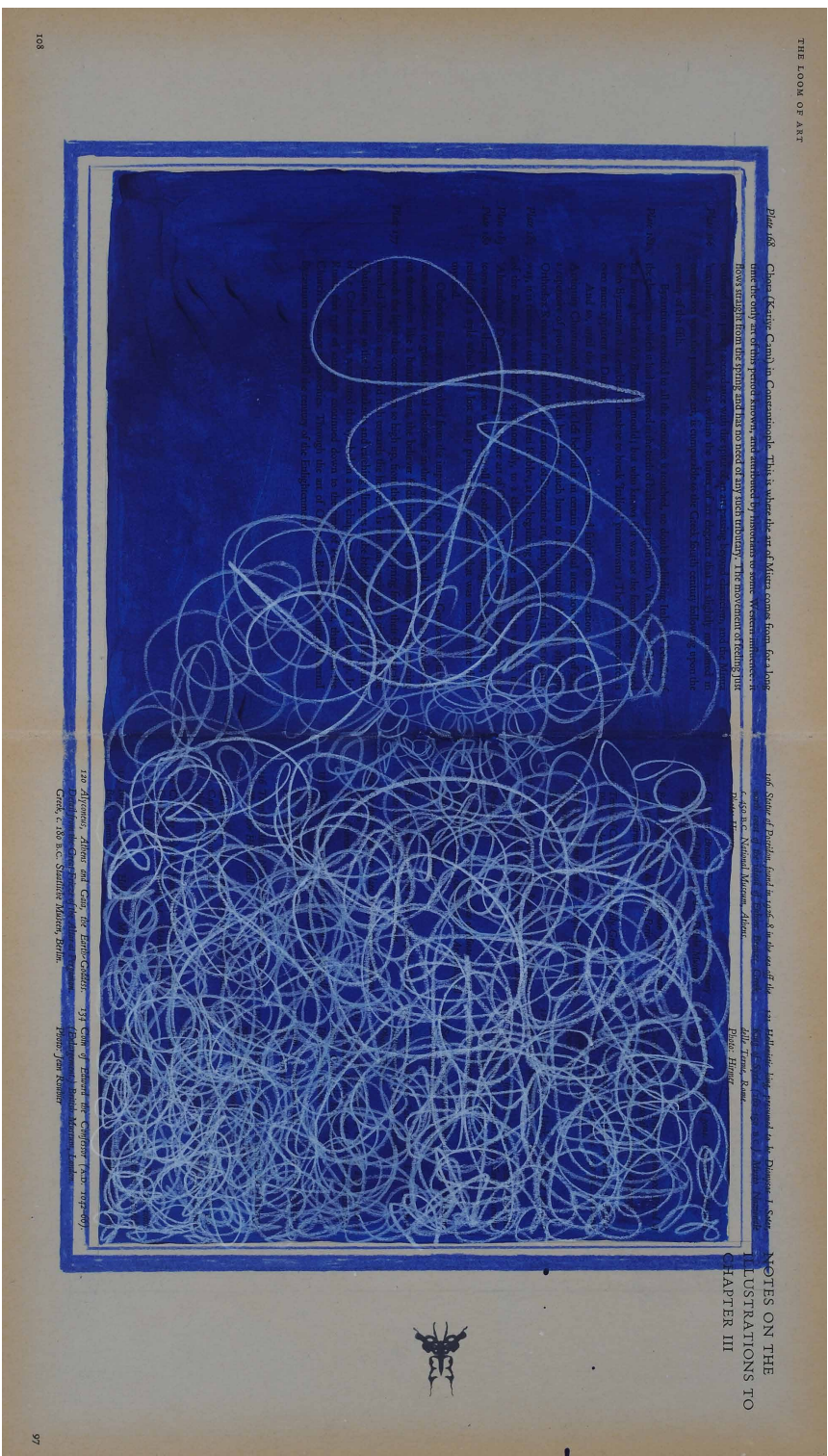


Julie Wolfe's work is rooted in the practice of gathering images and data to explore the world around us, but more importantly, the inner worlds of the self. Wolfe guides the viewer on a journey of transformation through richly conceived systems of color, form, and language that often serve as markers of time and place. It is fitting that the artist introduces us to her newest body of work at a time when the James Webb Space Telescope has provided humanity with our deepest and clearest views of the universe to date. By reflecting 13.1 billion years of light back to Earth, scientists have illuminated the farthest reaches of the cosmos for us to collectively study. It is impossible to resist meditating on our relationship to those distant stars while faced with the magnitude of information in these telescope images.

In *Opposing Forces*, Julie Wolfe continues the investigation of dichotomies in the natural and man-made worlds. By creating relationships between seemingly disparate elements, the artist asks viewers to ponder larger concepts of consciousness, perception, and their very existence within the expanding universe. Through this practice of seeking, Wolfe guides her audience toward a greater sense of meaning and order in an age that feels more like science fiction. Visual references and themes seen throughout the artist's career are re-examined in this body of work and serve to build upon those concepts. Julie Wolfe creates a space for viewers to stretch their perceptions; to conquer the pressing question of existence while also acknowledging that ultimately, the universe defies reason.

Frontispiece 1
2022
gouache on found book page
20 3/4 x 11 3/4 inches





Frontispiece 2

2022

colored pencil and gouache on archival pigment print on found book page

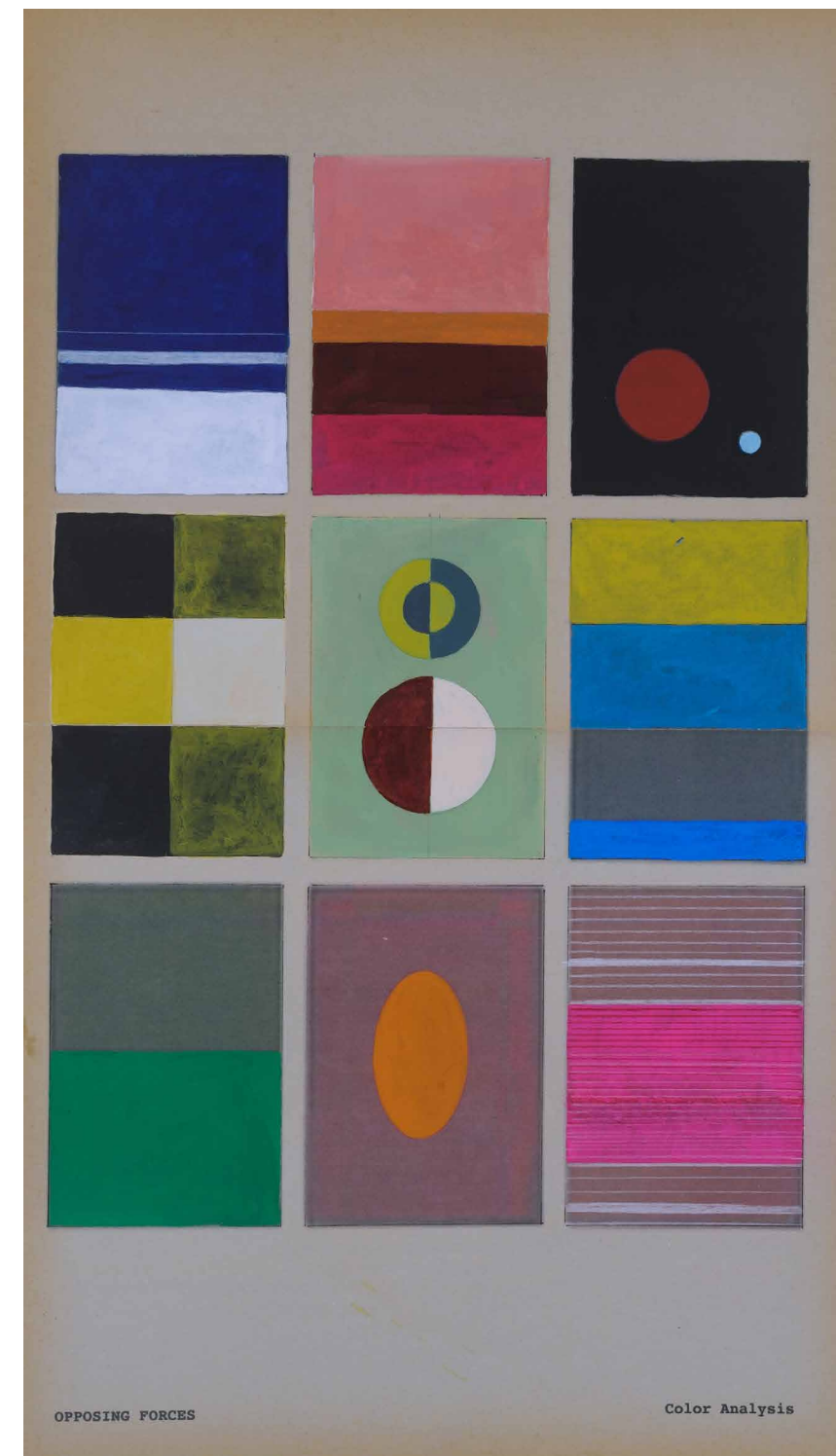
21 5/8 x 12 1/4 inches

Frontispiece 3

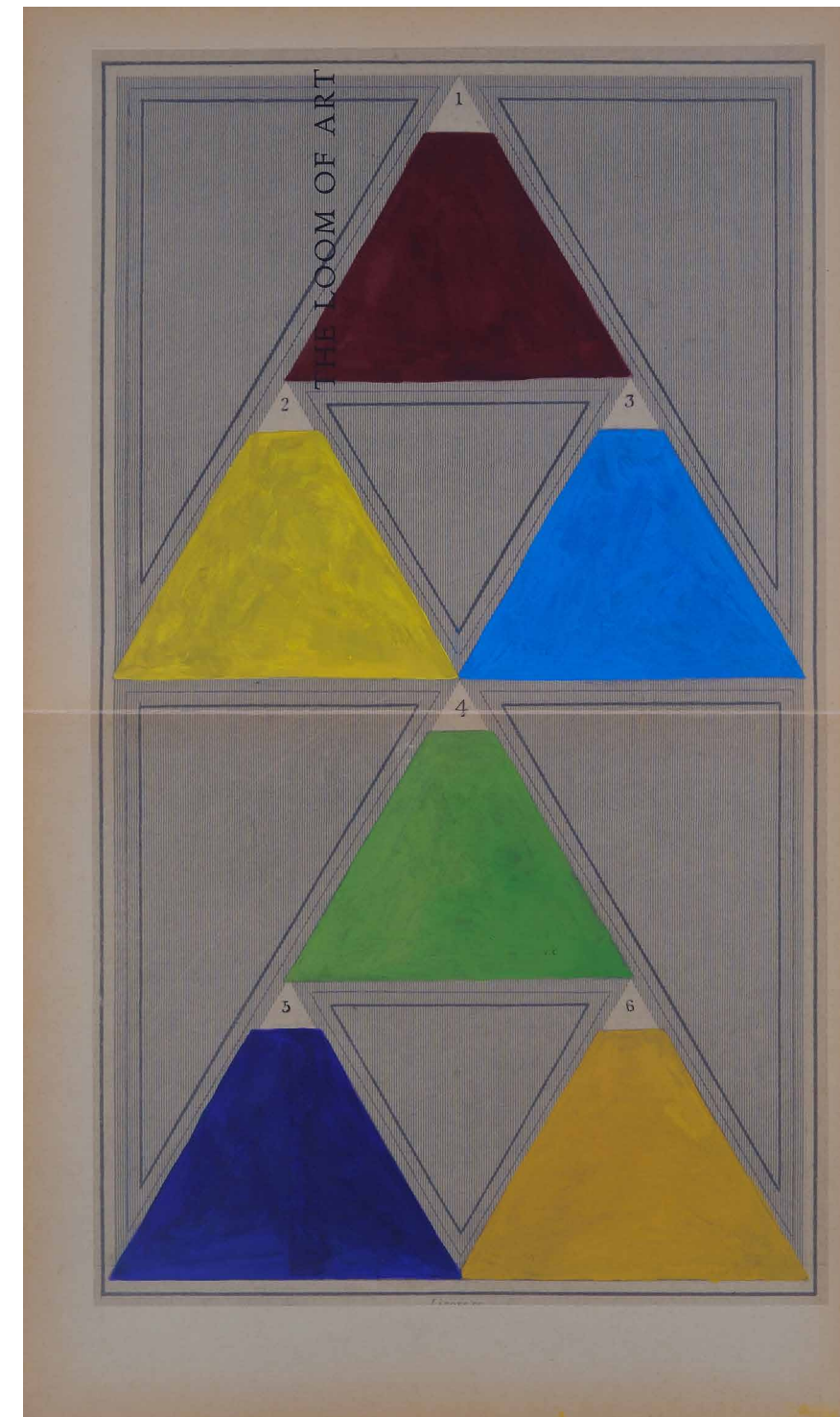
2022

colored pencil and gouache and archival pigment print on found book page

21 x 12 1/4 inches



Frontispiece 4
2022
gouache and archival pigment print on found book page
21 1/8 x 12 1/4 inches



Frontispiece 5

2022

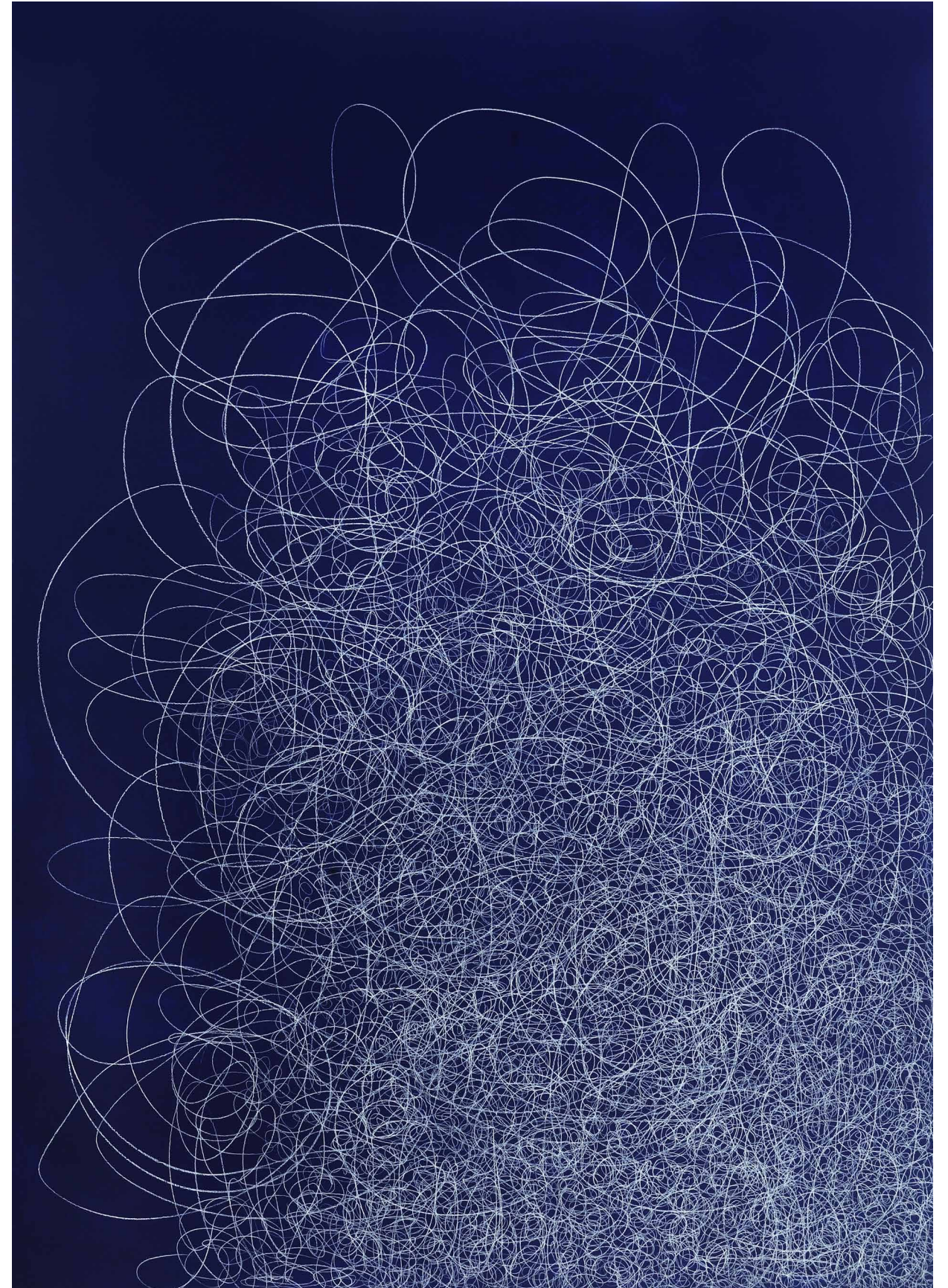
gouache and archival pigment print on found book page

21 1/4 x 12 1/4 inches





Infrastructure
2022
acrylic and colored pencil on wood panel
84 x 60 x 2 1/2 inches



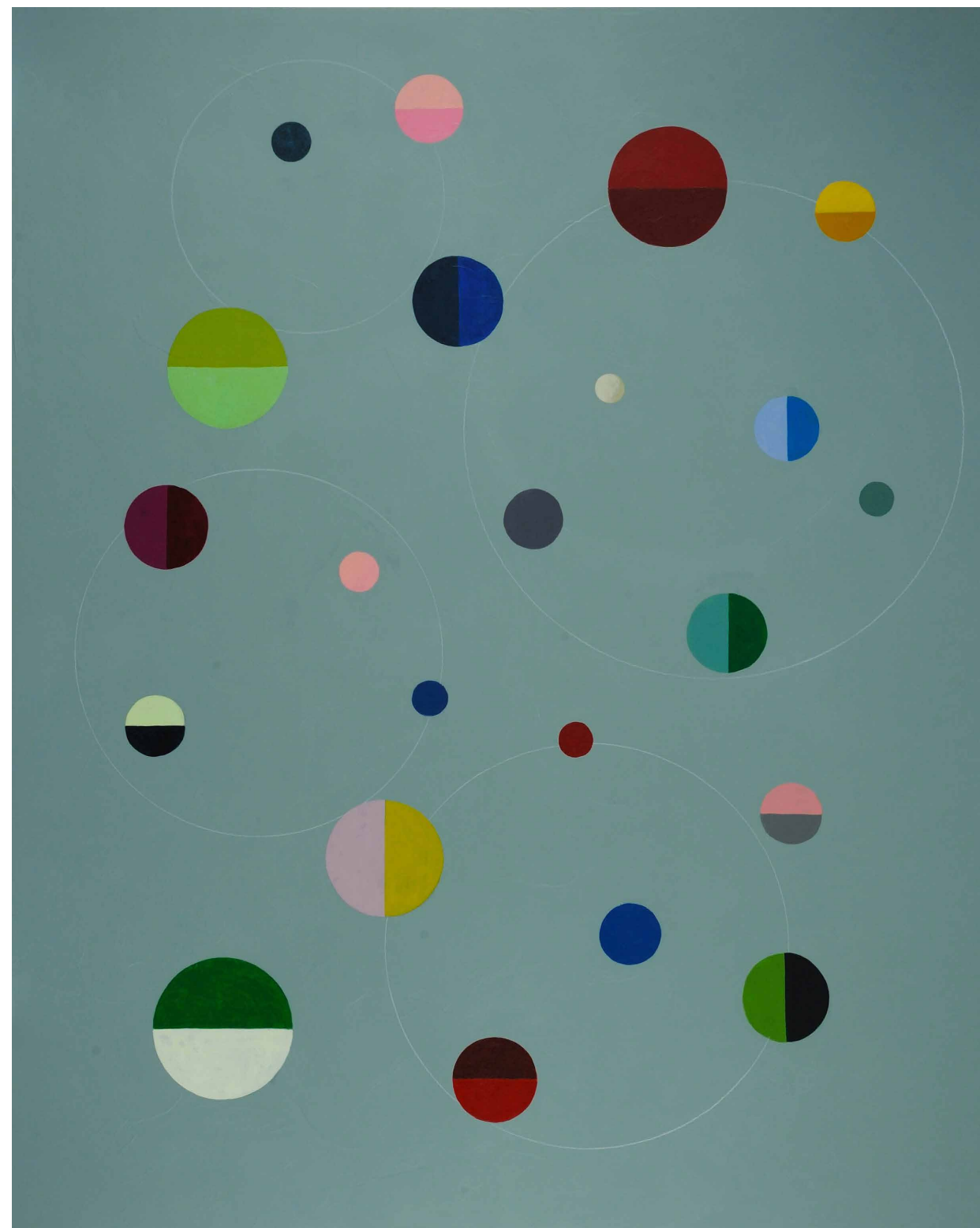
Opposing Forces: Play
2022
acrylic on wood panel
60 x 48 x 2 1/2 inches



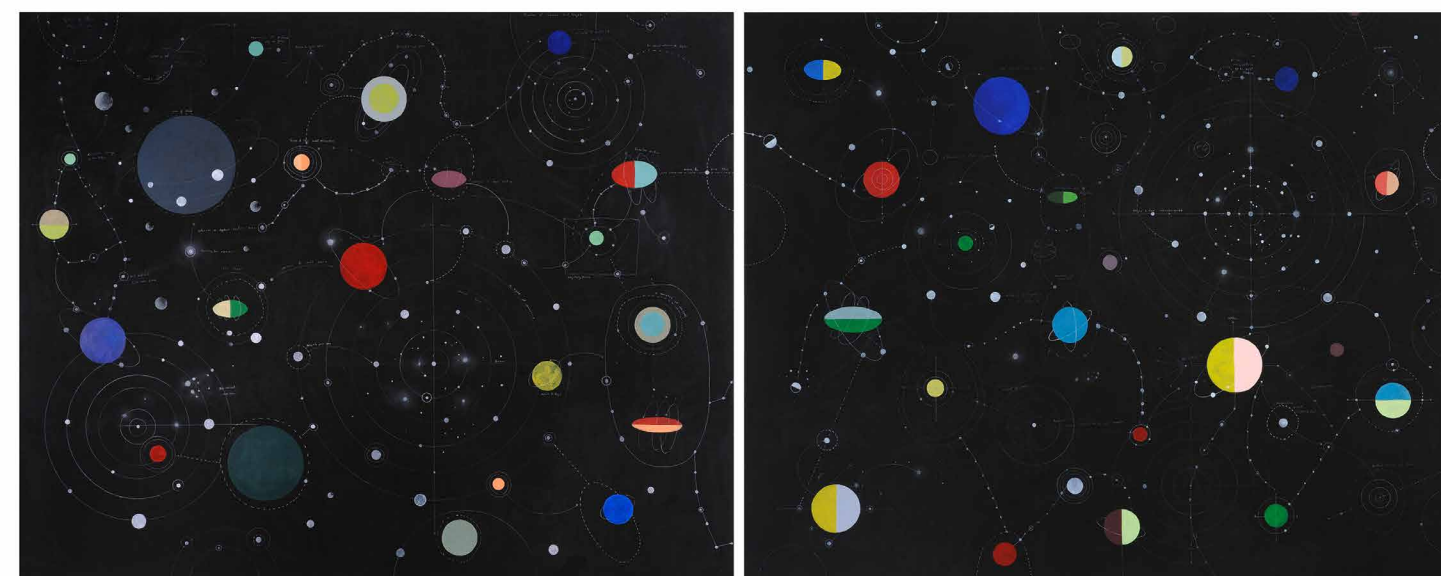
Opposing Forces: Before Shape
2022
acrylic and flashe on wood panel
60 x 48 x 2 1/2 inches

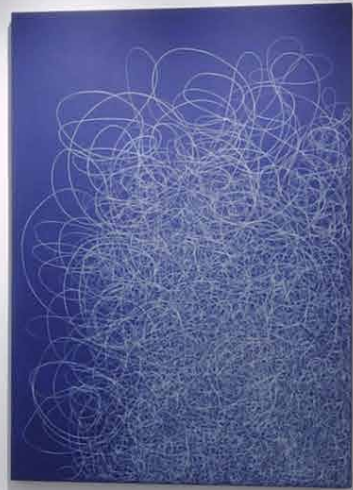


Oz
2022
acrylic and colored pencil on wood panel
48 x 60 x 2 1/2 inches



Return to Your Star I (diptych)
2022
acrylic, colored pencil, and chalk on wood panel
48 x 120 3/8 x 2 1/2 inches







Floor Plan 14
2022

walnut ink, gouache, and colored pencil on archival pigment print
60 x 42 inches

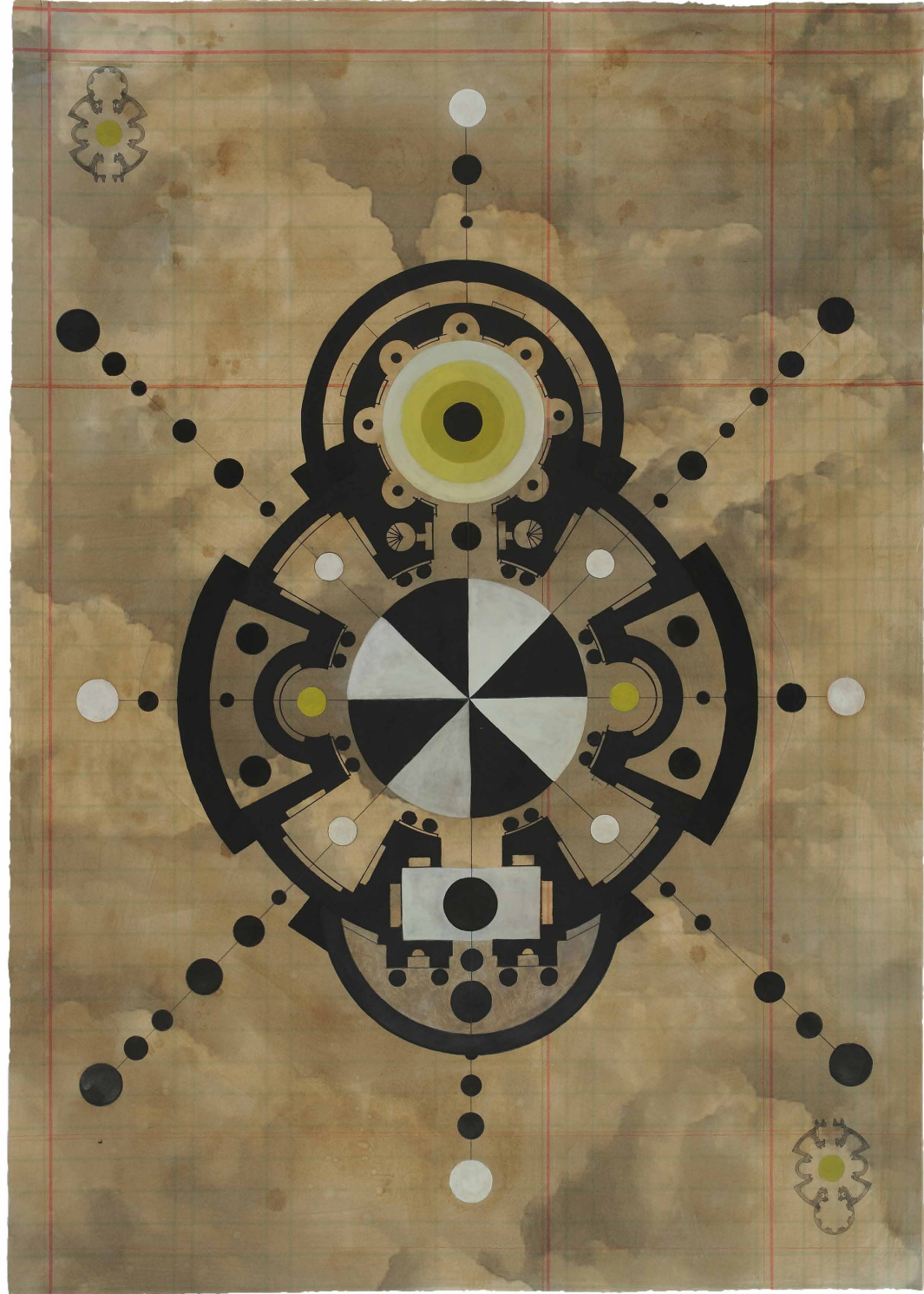


Floor Plan 15

2022

walnut ink, gouache, and colored pencil on archival pigment print

60 x 42 inches

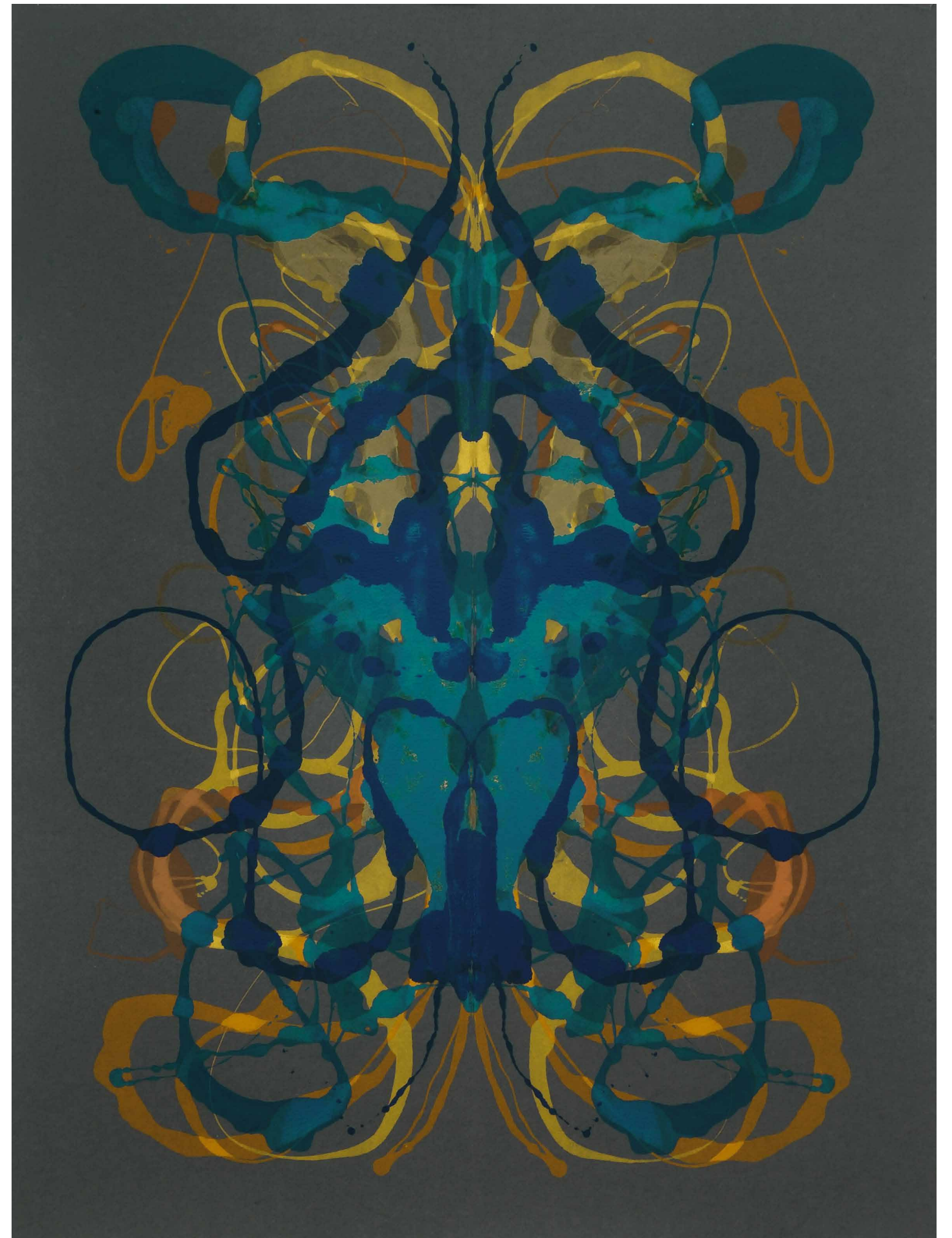


Floor Plan 16
2022

walnut ink, gouache, and colored pencil on archival pigment print
60 x 42 inches



Completing the Bestiary 1
2022
acrylic on wool felt
84 x 60 inches





Eta Carinae: Divinatory Claims

2022

ink on archival pigment print on Arches paper 300gsm

89 x 126 inches

triptych, each panel 89 x 42 inches

(Detail of previous page)



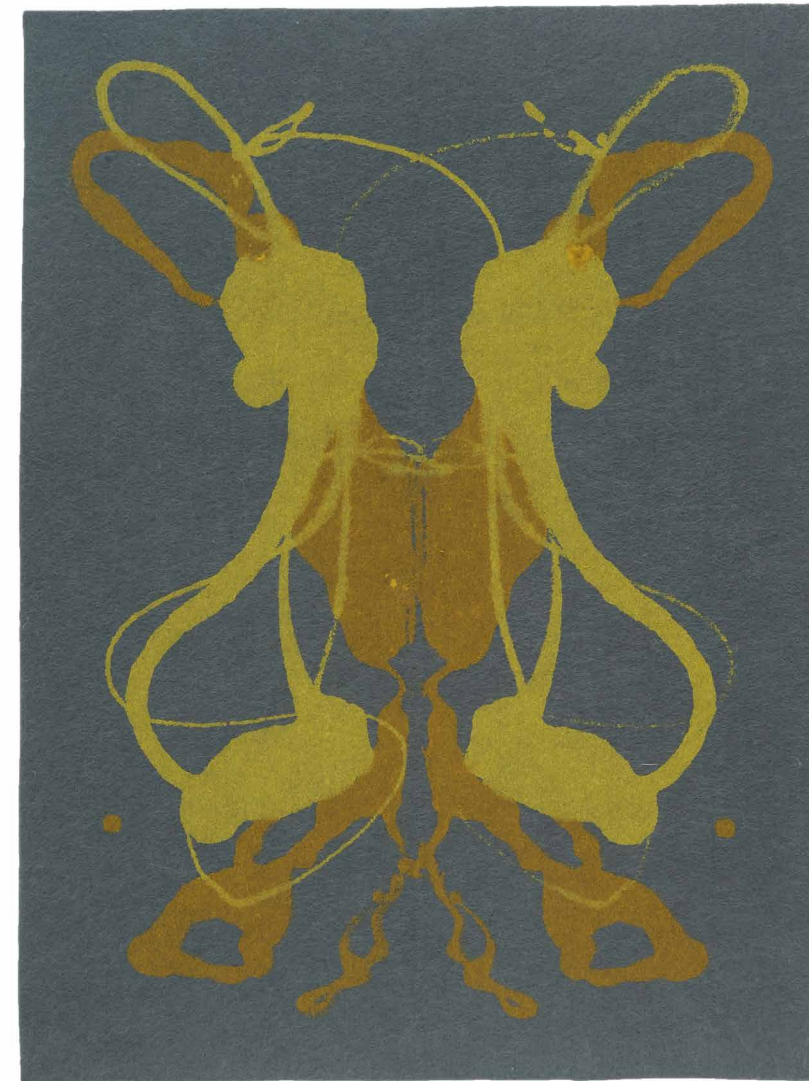
Completing the Bestiary 2
2022
acrylic on wool felt
16 x 12 inches



Completing the Bestiary 3
2022
acrylic on wool felt
16 x 12 inches



Completing the Bestiary 4
2022
acrylic on wool felt
16 x 12 inches



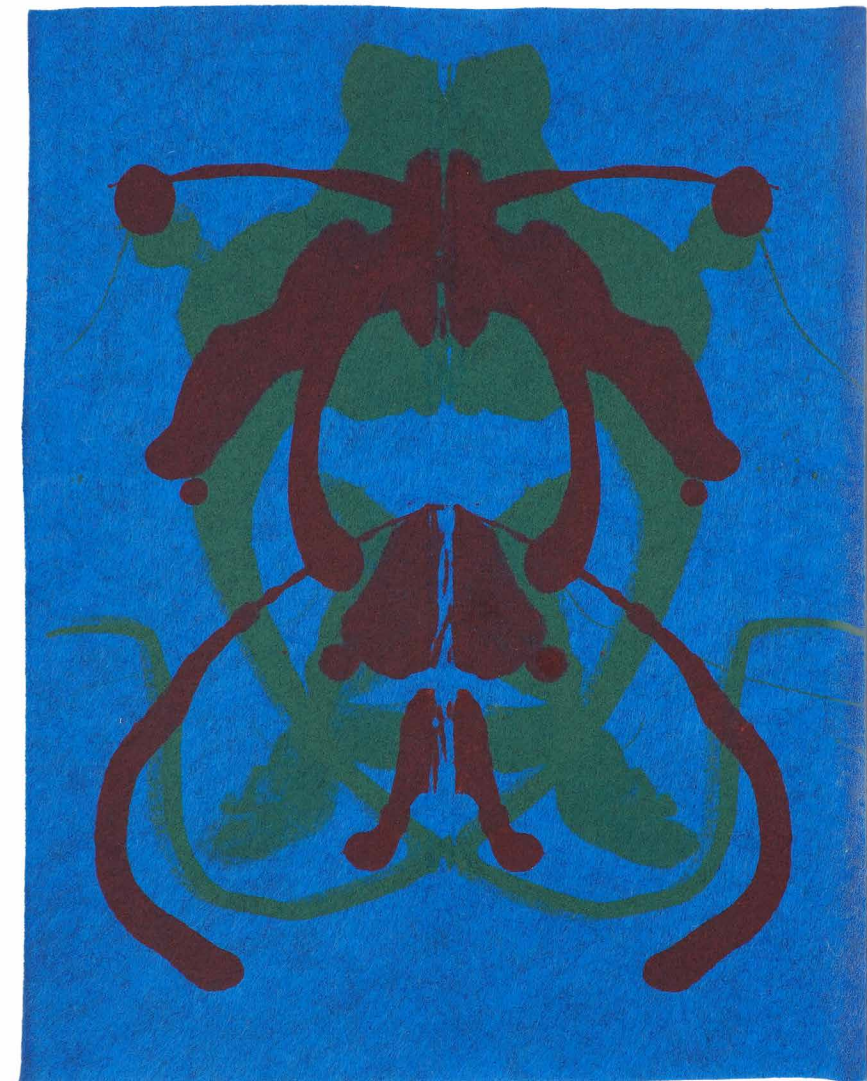
Completing the Bestiary 5
2022
acrylic on wool felt
16 x 12 inches



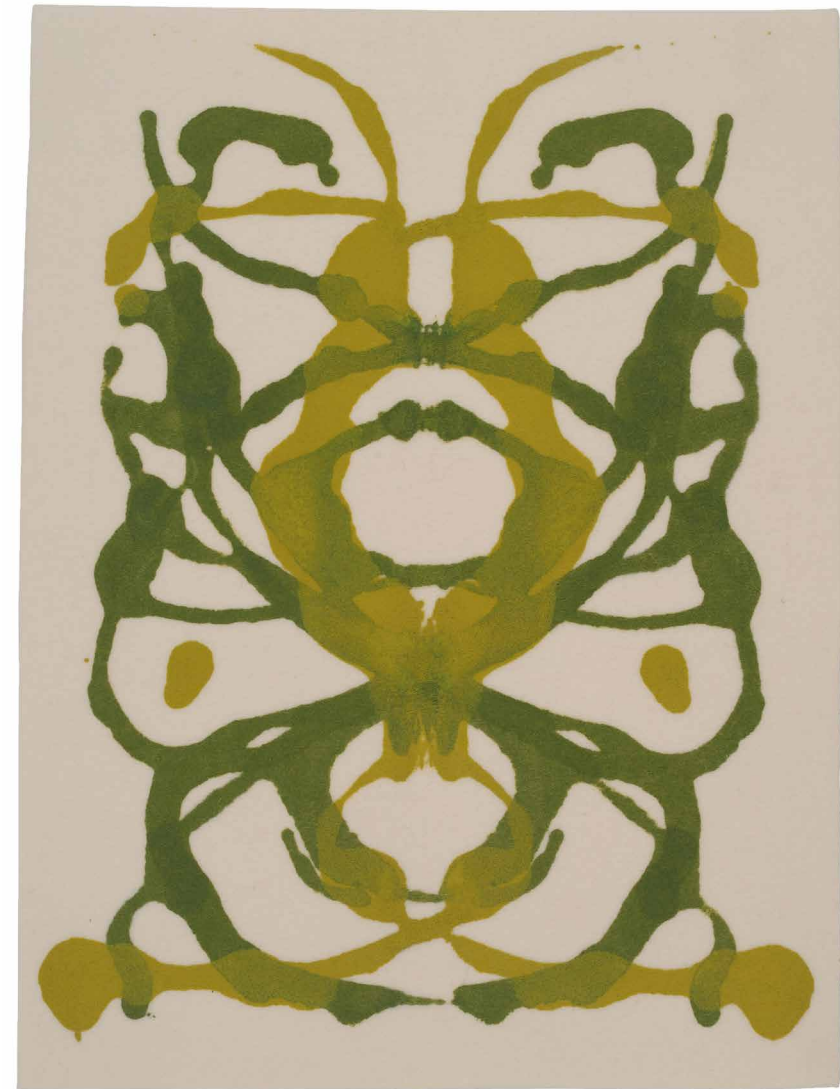
Completing the Bestiary 6
2022
acrylic on wool felt
16 x 12 inches

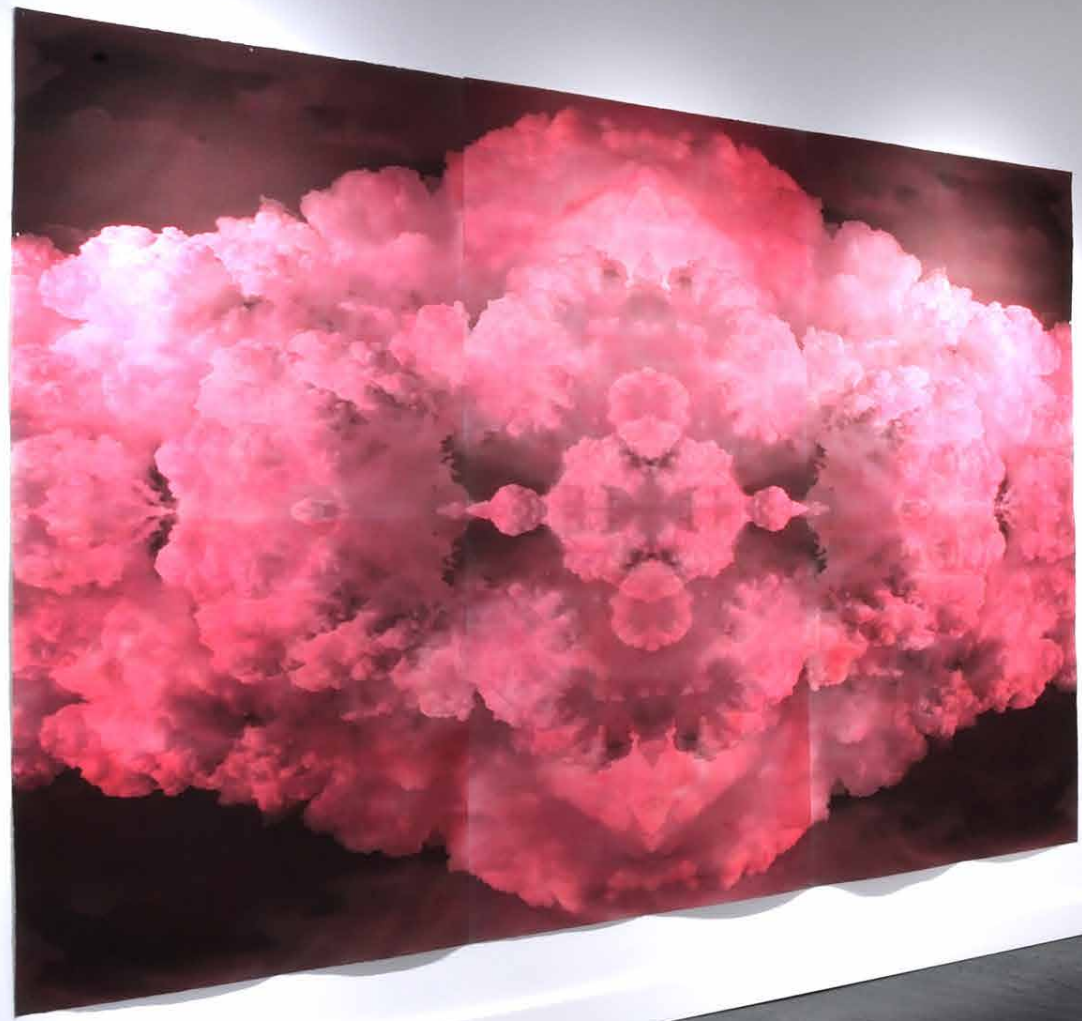


Completing the Bestiary 7
2022
acrylic on wool felt
16 x 12 inches



Completing the Bestiary 8
2022
acrylic on wool felt
16 x 12 inches





HEMPHILL