



**Black, White and...**





**MARK KELNER**

*Newman, Barnett (b. 1905), Black Fire I, 1961, 2025*

acrylic on canvas

15 x 11 inches

\$4,500



**MARK KELNER**

*Picasso, Pablo (b. 1881) Dora Maar au chat, (Dora Maar with Cat), 1941, 2025*

acrylic on canvas

15 x 11 inches

\$4,500



**MARK KELNER**

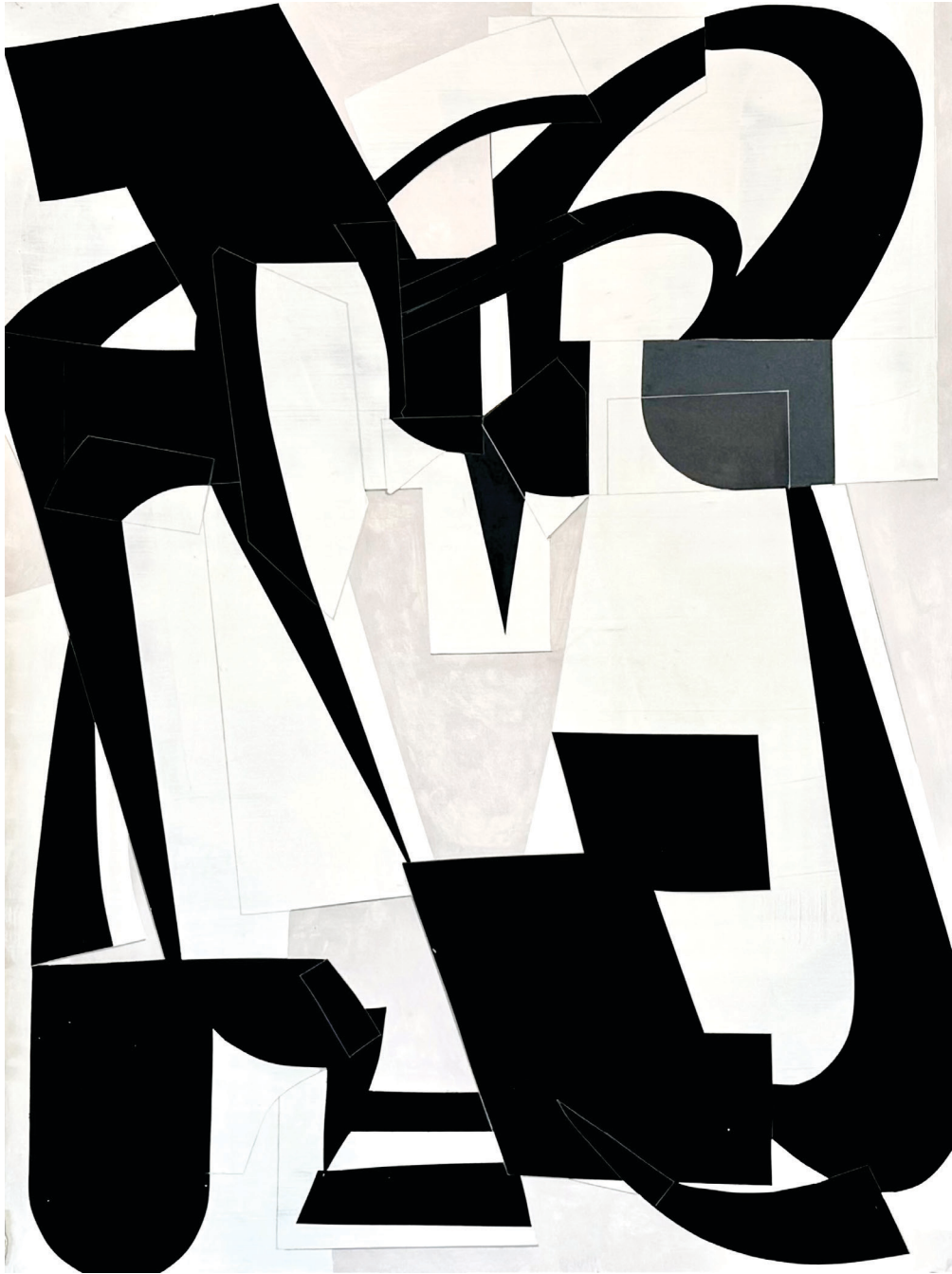
*Gauguin, Paul (b. 1848), Nafea Faa Ipoipo, (When Will You Marry?), 1892, 2025*

acrylic on canvas

15 x 11 inches

\$4,500





**TIM DOUD**

*AWL Study 5, 2025*

acrylic on Lanaquarelle Paper

30 x 22 inches

\$2,800



**TIM DOUD**

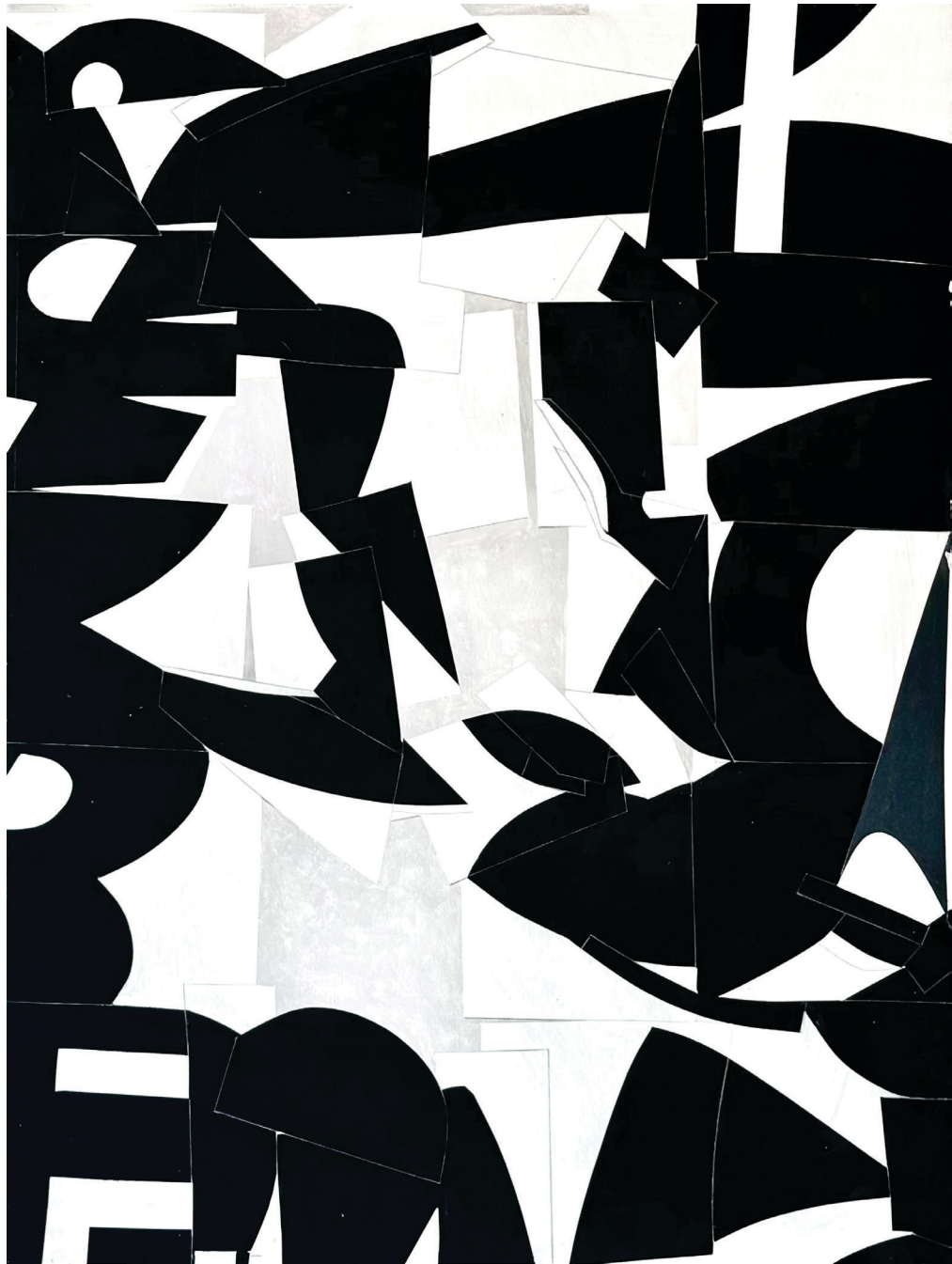
*AWL Study 2, 2025*

acrylic on Lanaquarelle Paper

30 x 22 inches

\$2,800





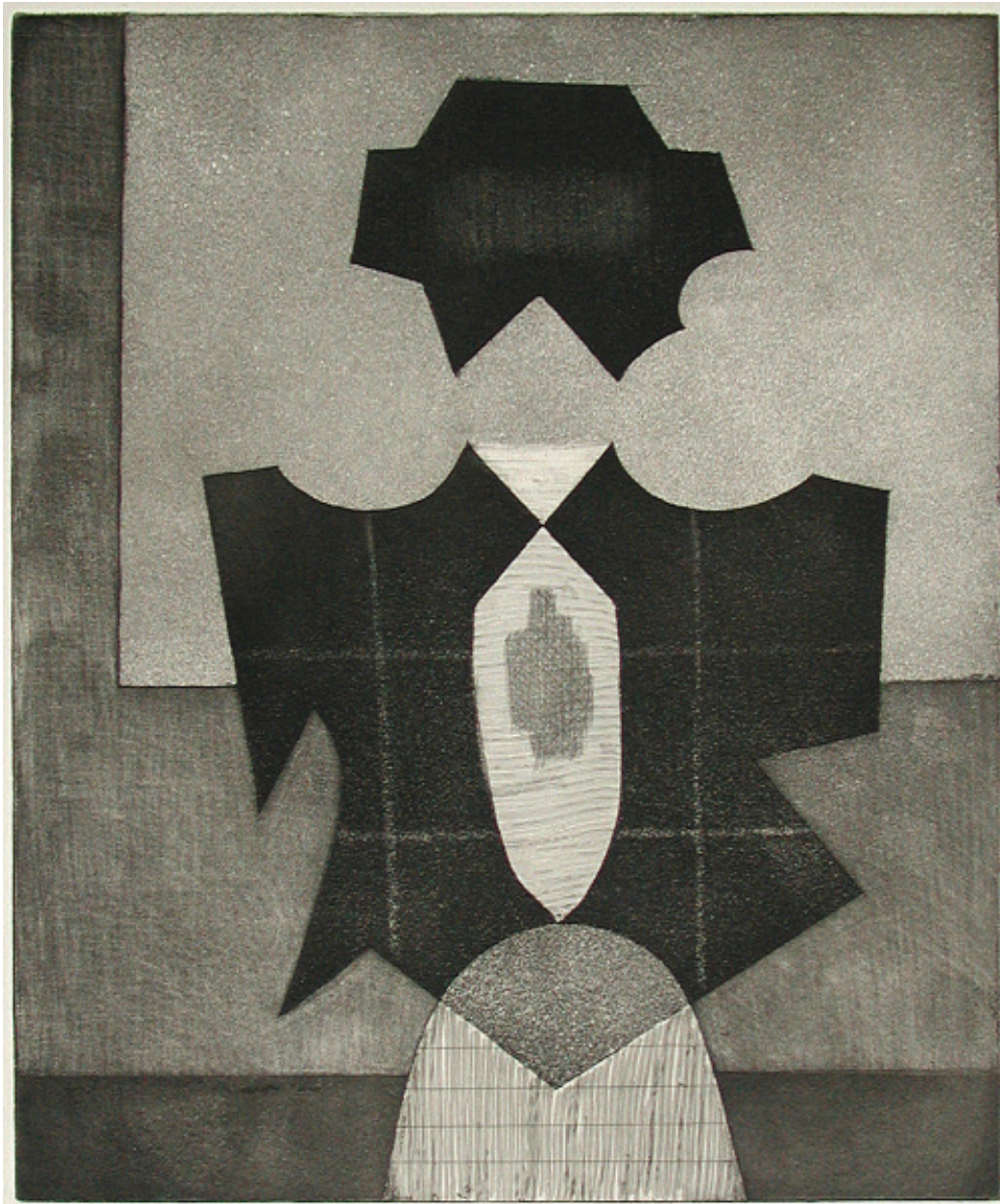
**TIM DOUD**

*AWL Study 1, 2025*

acrylic on Lanaquarelle Paper

30 x 22 inches

\$2,800



**JACOB KAINEN**

*Mr. Kafka*, 1970

aquatint etching and drypoint

19 1/2 x 15 7/8 inches

Edition 21/25

\$3,100





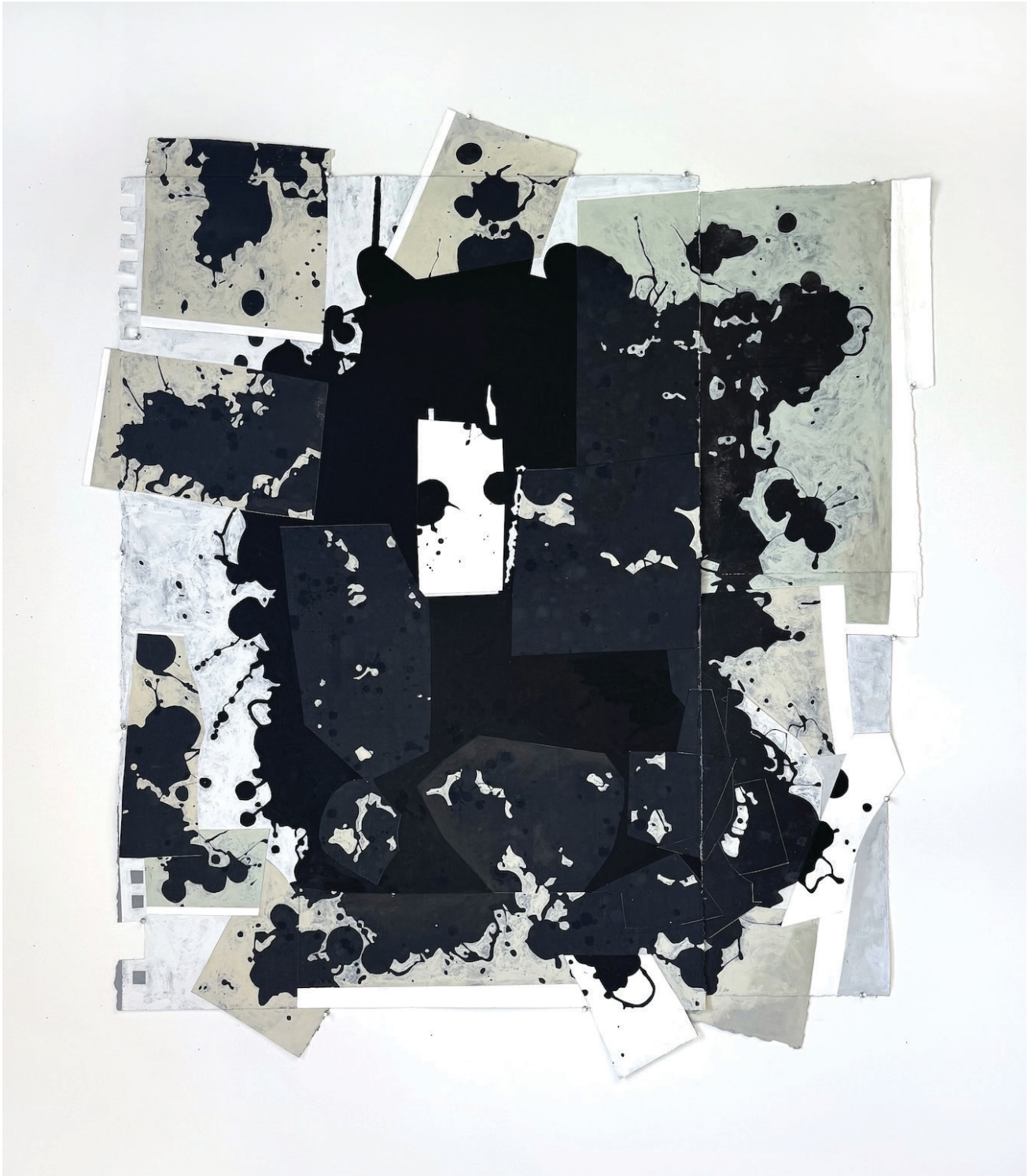
**PAUL REED**

*Emerging XIV*, 1967

acrylic on canvas

35 x 59 inches

\$12,000



**TIM DOUD**

*Constructed Splat 5*, 2025

mixed media on paper

69 1/2 x 61 inches

\$9,000





**TIM DOUD**

*Constructed Splat 3*, 2025

mixed media on paper

83 x 67 inches

\$11,000



**WILLIAM CHRISTENBERRY** (1936-2016)

*Untitled, 2006 (April), 2006*

ink on paper

40 x 32 inches

\$12,750





**RICHARD HUNT**

*Untitled, c. 1972*

Lithograph

Diptych (dimensions each sheet)

13 3/4 x 11 inches

Edition Cancellation Proof

\$3,500



**THOMAS DOWNING**

*Les Danseurs And The Water Glass* 5/23/82, 1982

graphite and acrylic on canvas

60 x 48 inches

\$32,000





**ANNE ROWLAND** (1957)

*How Can You Stand It (Moritarty, New Mexico)*, 2022

archival pigment print on rag paper

50 x 37 1/2 inches

Framed Dimensions: 55 1/2 x 43 x 2 inches

Edition 1 of 4

\$8,150





**ANNE ROWLAND** (1957)

*Get Out While You Still Can (Samora Correia, Portugal)* , 2022

archival pigment print on rag paper

50 x 37 1/2 inches

Framed Dimensions: 55 1/2 x 43 x 2 inches

Edition 1 of 4

\$8,150





**ROBERT NOVEL** (1943-2021)

*Untitled*, 2015-2016

acrylic on canvas

48 x 48 inches

\$6,000





**AMY SCHISSEL**

*Systems Fever*, 2025

acrylic, graphite, pen, and charcoal on paper mounted on wood panel

42 x 40 1/4 inches

\$6,200





**AMY SCHISSEL**

*Animate Field*, 2025

acrylic, graphite, pen, and charcoal on paper mounted on wood panel

42 x 40 1/4 inches

\$6,200

HEMPHILL

434 K Street NW Washington DC 20001 | [hemphillartworks.com](http://hemphillartworks.com) | 202.234.5601